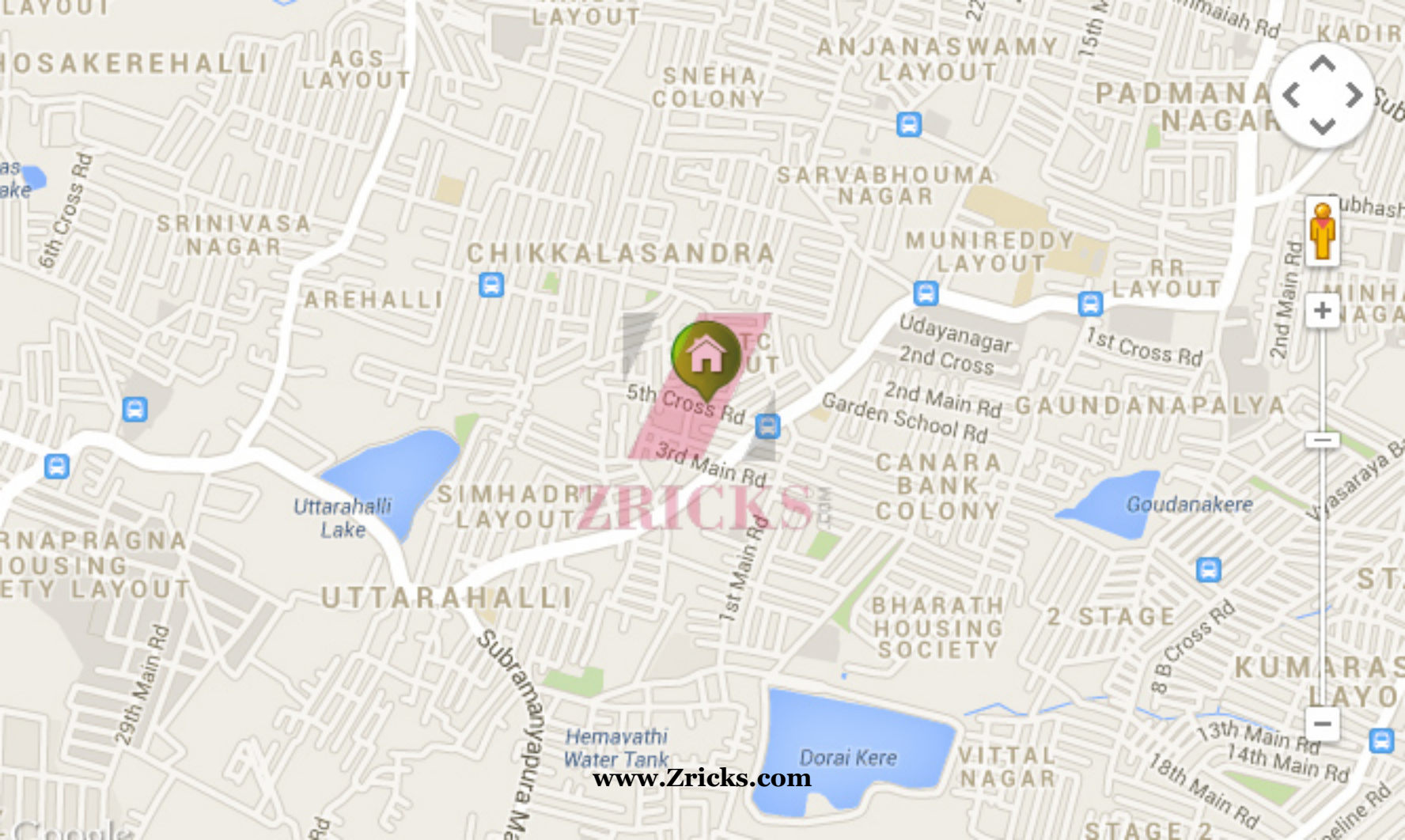




ZRICKS.COM

[www.Zricks.com](http://www.Zricks.com)



**Zricks**

[www.Zricks.com](http://www.Zricks.com)

# MANAR SORRENTO

PROPOSED PROJECT @ B.T.M. LAYOUT... BANGALORE...



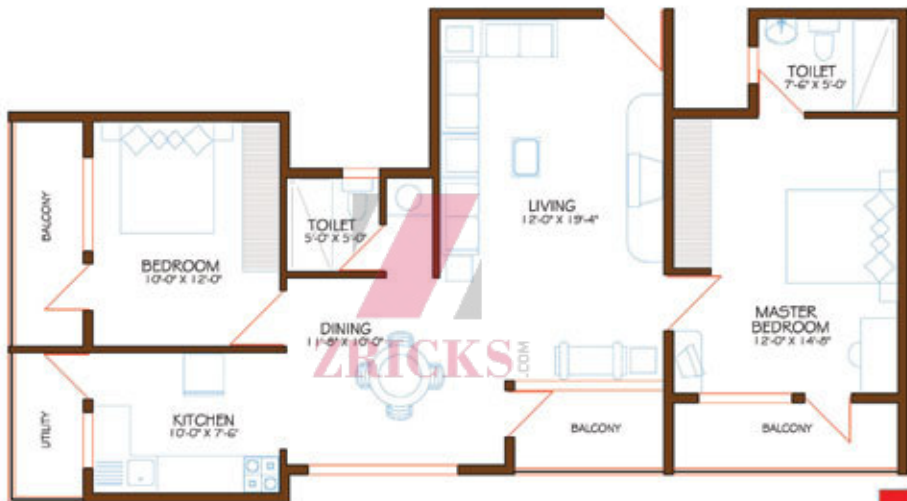
[www.Zricks.com](http://www.Zricks.com)



KEY PLAN

# MANAR SORRENTO

PROPOSED PROJECT @ B.T.M. LAYOUT, BANGALORE...

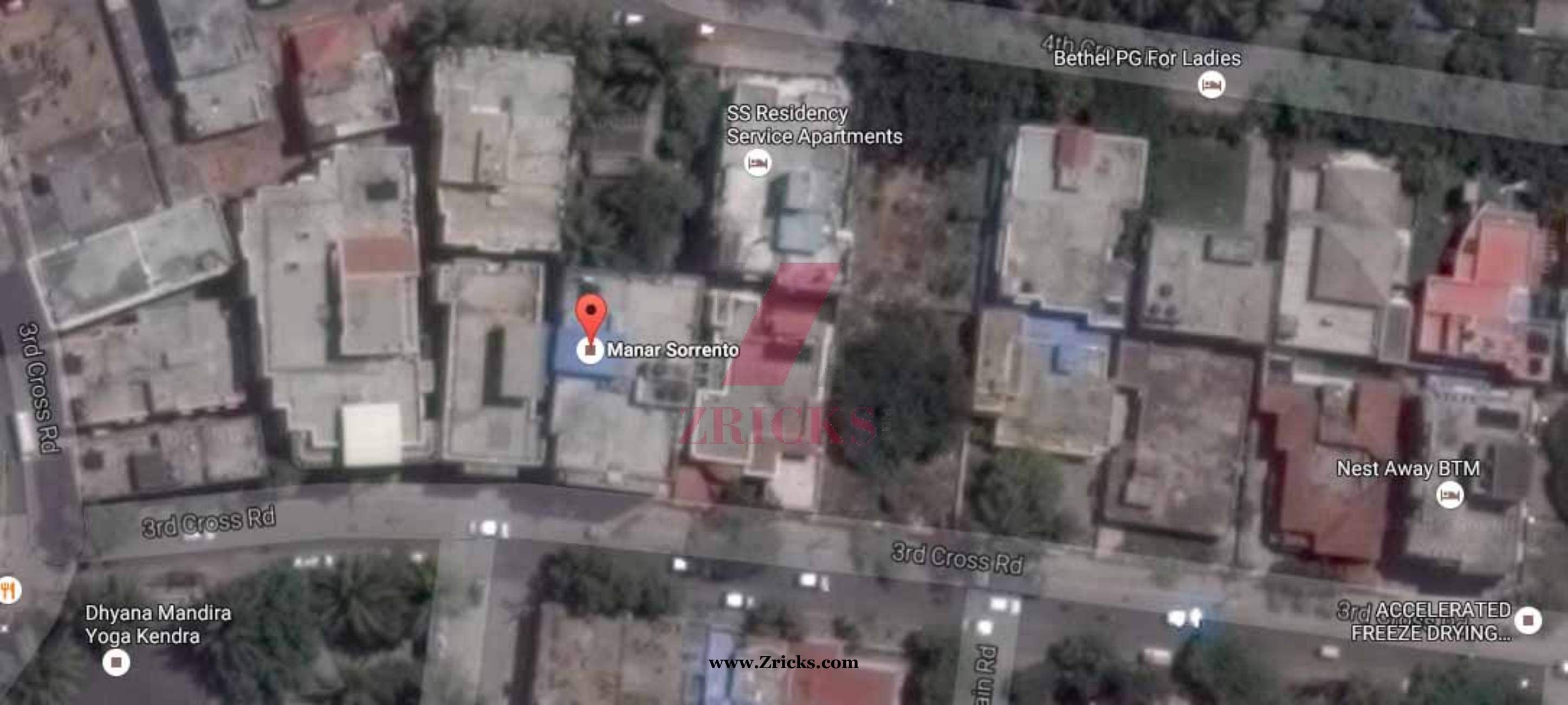


[www.Zricks.com](http://www.Zricks.com)



KEY PLAN





4th Cross Rd  
Bethel PG For Ladies

SS Residency  
Service Apartments

  
Manar Sorrento

ZRICKS

Nest Away BTM

3rd Cross Rd

3rd Cross Rd

3rd Cross Rd

Dhyana Mandira  
Yoga Kendra

3rd ACCELERATED  
FREEZE DRYING...

[www.Zricks.com](http://www.Zricks.com)



## Specification

### ⊕ Structure

- Seismic Zone II compliant RCC framed structure of high quality.
- Concrete solid block masonry 6' for external & 4' for internal walls.

### ⊕ Plastering

- All internal walls are finished with lime rendering.
- All external walls are sand faced finish.

### ⊕ Flooring

- Quality vitrified tiles for Living & Dining.
- Rectified ceramic tiles for Bedrooms & Kitchen.
- Anti-Skid tiles for Balcony, Toilets & Utility.

### ⊕ Kitchen

- An open, well-ventilated Kitchen with Utility space attached.
- Granite platform with Stainless Steel Sink with drain board, 2' height glazed tiles dadoing.
- Provision for water purifier.
- Provision for exhaust fan.
- Provision for electrical plumbing point in utility area for washing machine.
- Option for Modular Kitchen: Only Electrical and Plumbing points will be provided

### ⊕ Doors

- **Main Door:** Teak wood frame with Teak paneled shutter with brass hardware and polish on both sides.
- **Internal Doors:** Sal wood frame with flush doors for toilets & balcony's waterproof flush doors (good quality hinges, locks and handles), with superior enamel paint.

### ⊕ Windows

- Powder coated Aluminium sliding windows with clear glass in three tracks, provision for mosquito mesh with protective MS designed grill

### ⊕ Paint

- Internal walls and ceilings: Superior quality Acrylic Distemper paint.
- External walls: Water proof colored cement paint.

### ⊕ Toilets

- Quality glazed tiles dado up to 7' height.
- White sanitary ware of hind ware/CERA brand.
- Hot & Cold water mixer unit for showers, reputed make CP Fittings.
- Health faucet will be provided in all toilets.
- Provision for geyser in all toilets.
- Provision for exhaust fan.

### ⊕ Electrical

- Best quality fire resistant cables, wiring through PVC conduits concealed in walls and ceilings.
- Best quality Modular Switches.
- TV point in Living and Master Bedroom.
- Telephone point in Living and Master Bedroom.
- Split AC point in Master Bedroom.
- For safety One Earth Circuit Leakage Breaker(ELCB) AND MCB's.
- 3KW for 2BHK & 4KW for 3 BHK

### ⊕ Generator

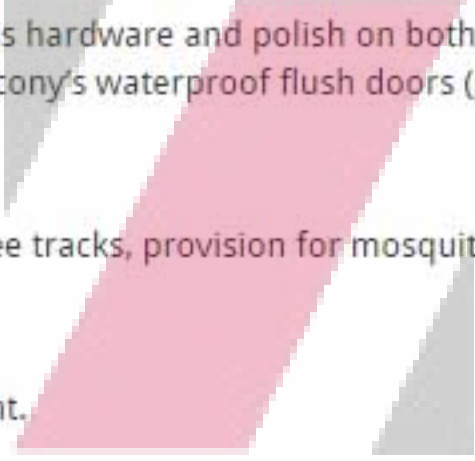
- Power back up for each flat 0.5 KW.
- Power back up for common area lighting and Water Motors.

### ⊕ Lift

- Reputed make of 6 passenger Lift, with power back-up

### ⊕ Parking

- Well planned sufficient covered / open car parking



ZRICKS.COM